

Knot House

Specialist brain injury care home in Cheshire



voyagecare 

Say hello to Knot House!

Located in Ellesmere Port, Cheshire, Knot House is a **purpose-built brain injury care home**, that will offer rehabilitation support for up to 28 individuals who have suffered brain injuries.

Our home will provide residential, transitional living and long-term independent living support, designed to deliver a **full rehabilitation pathway** from the start of your brain injury journey.

People that live here will be empowered to **develop their skills** along an active rehabilitation pathway, and supported to achieve their rehab goals in a functional setting.

Split across **two buildings**, Knot House has:

- ✓ 12 en-suite bedrooms
- ✓ 4 transitional flats
- ✓ 12 long-term apartments

Both buildings will be fully wheelchair **accessible throughout** with an on-site lift.

There will be a fully-equipped gym where the people we support will be empowered to **take control of their physical health and well-being**.

We're also creating **dedicated communal spaces** to encourage interaction, as developing relationships with peers within the home is essential.

And because we know access to outdoor space is important, our spacious home will be framed by a **landscaped garden and courtyard**, within the heart of the Ellesmere Port community.





28-bed 
brain injury home
offering both
active rehabilitation
and long-term
support.

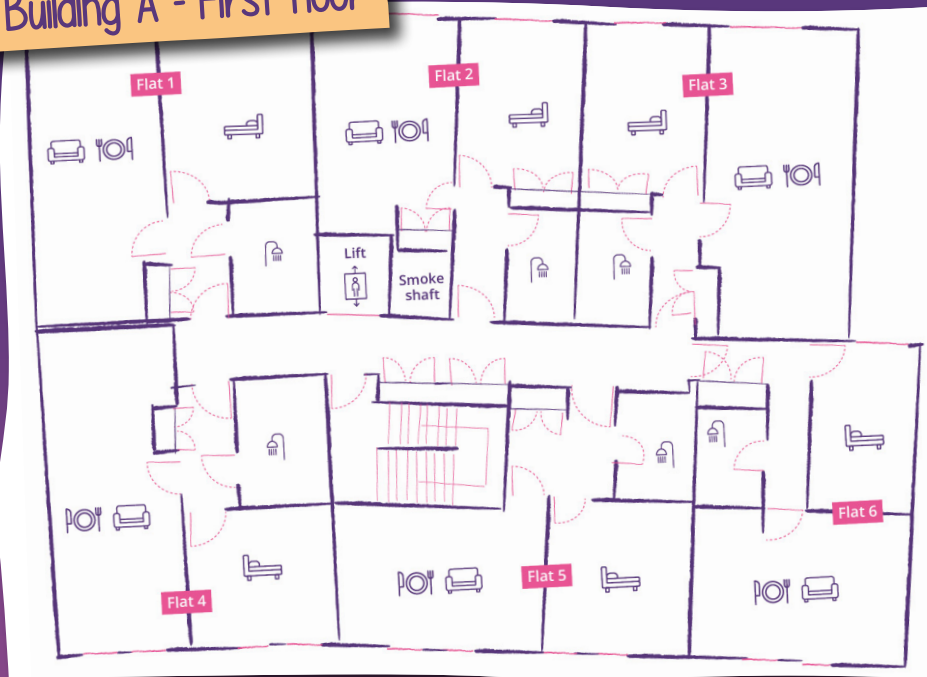
Knot House Floor Plans

Knot House has **two main buildings**, Building A and Building B, each designed to provide different levels of support for those living with brain injuries. **Building A** has three floors, all connected with a lift and wide corridors for **added accessibility**.

Building A - Ground floor



Building A - First floor



Ground floor

The ground floor of Building A will mostly provide facilities for our team.

One unique feature is the retail space where or team intended to open a shop on the main high street.

This retail space will provide individuals with volunteer or paid work opportunities as part of their rehab.

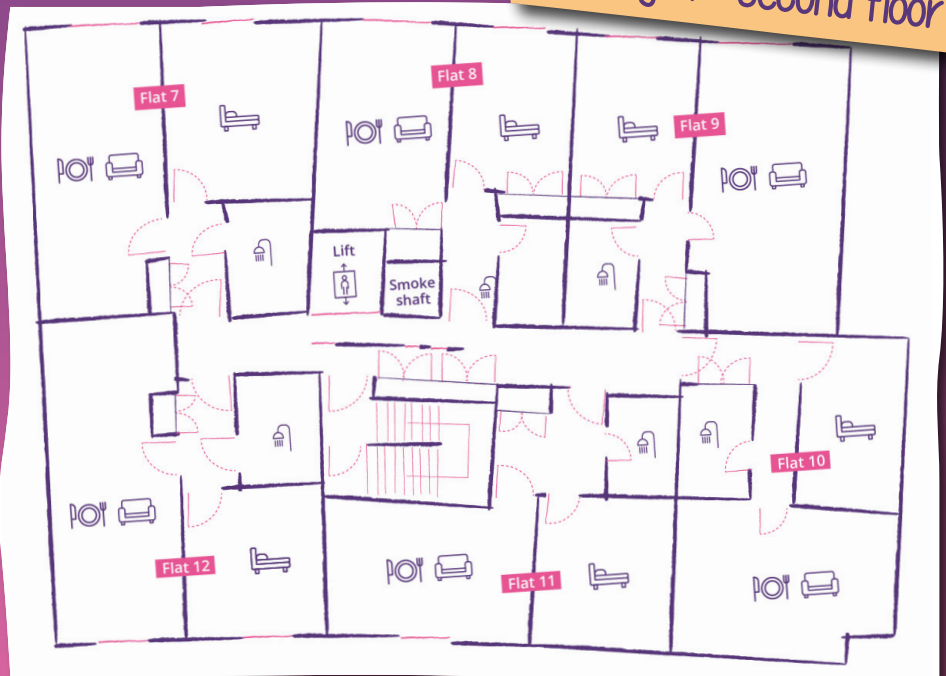
First and second floor

The additional two floors will be home to 12 long-term apartments, each designed to a high-spec.

There are six flats on each floor, accessible via a lift.

Some of the flats will have windows onto the popular high street below, while others will overlook our courtyard garden area.

Building A - Second floor



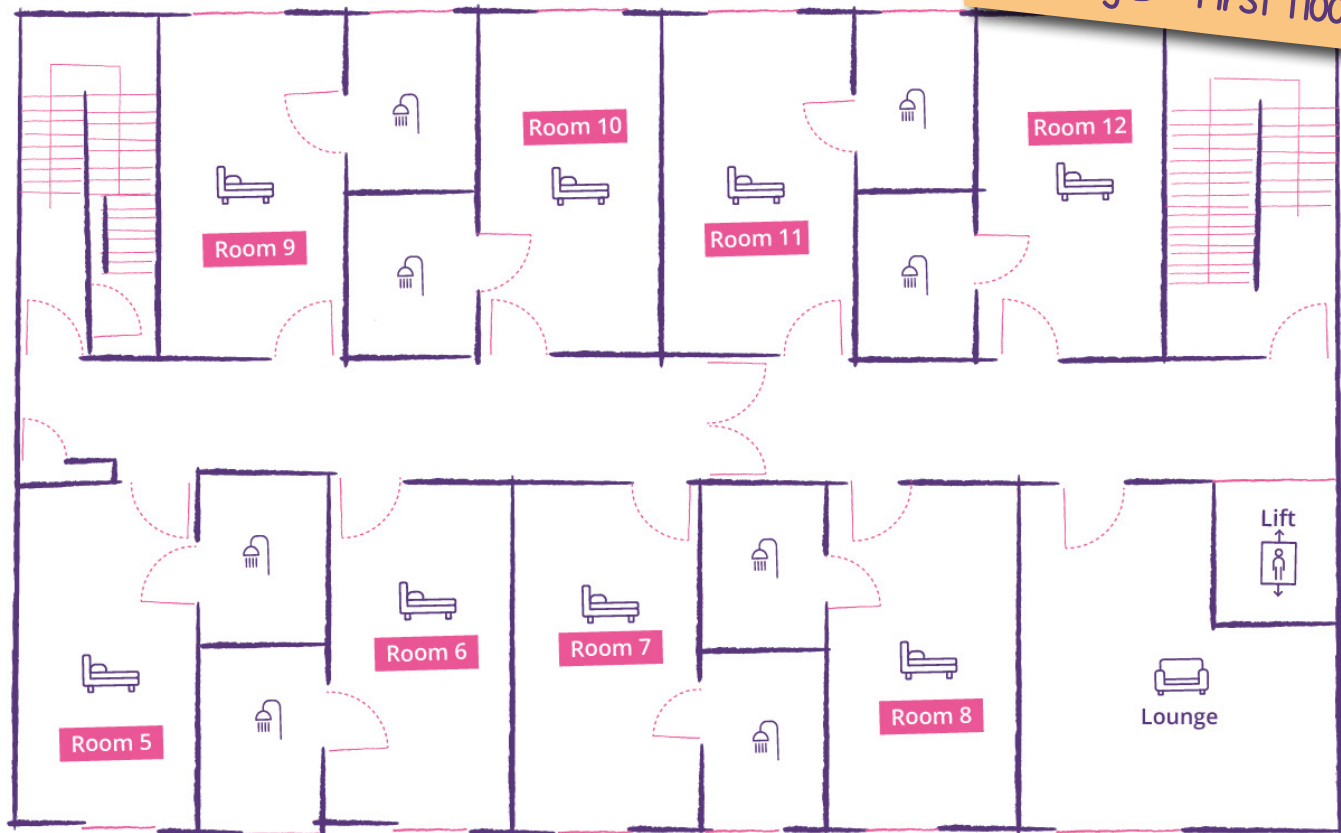
Ground floor

Building B has two floors and surrounds our courtyard area. There is a lift for access to the first floor, a communal kitchen, dining room and living room, plus four transitional living flats.

Building B - Ground floor



Building B - First floor



Rehab facilities

Building B, also has designated rehab facilities individuals can use during their stay to maximise rehabilitation outcomes.

There is an on-site, fully-equipped gym to support physiotherapy requirements as well as a fully-adapted training kitchen to promote the functional skill development.

First floor

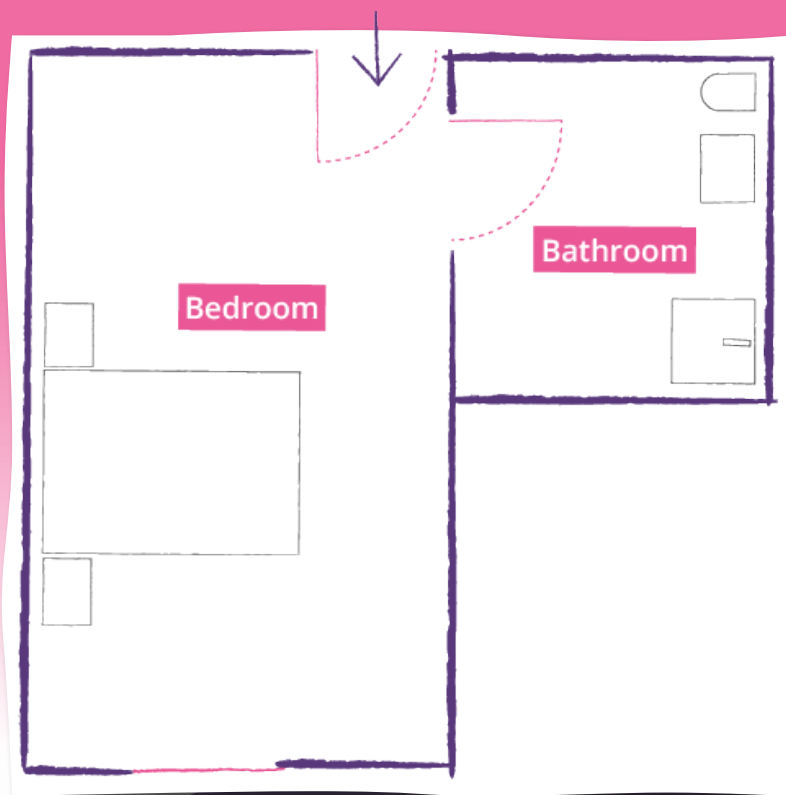
The first floor of Building B has eight en-suite bedrooms for those at the earlier stages of their rehabilitation journey.

There's also a communal living room which allows individuals to relax in the company of others who are on a similar pathway and develop meaningful relationships.

Residential en-suites

Our residential en-suite rooms provide a **structured environment** alongside regular specialist neuro-therapy support sessions delivered by a dedicated Therapy Lead.

These rooms have been designed to support functional rehabilitation and are perfect for those looking for a **step-down solution** from hospital, a **step-up solution** from a community setting, or those that need **additional safety and support** from an expert team.



The details...

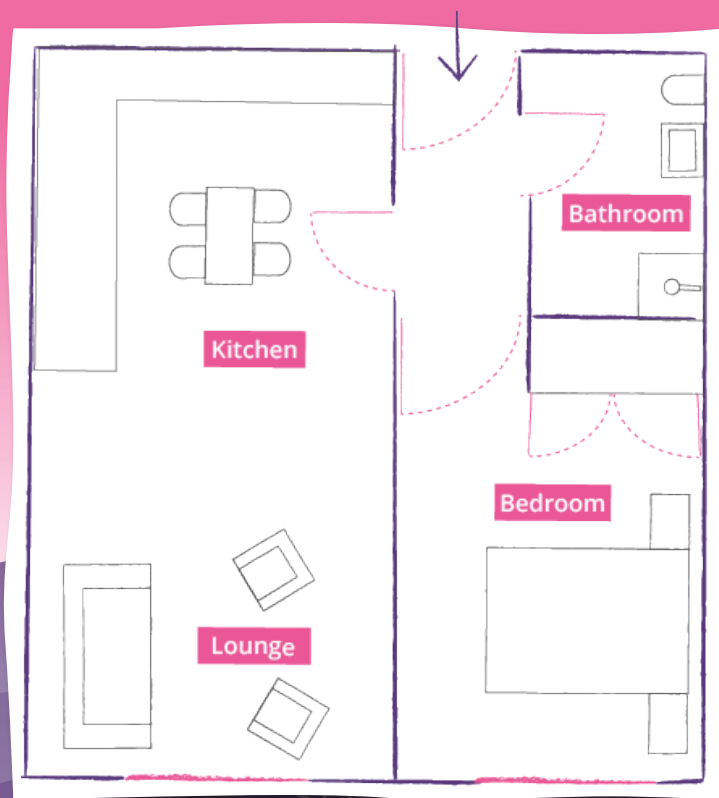
Our en-suite rooms are designed to provide comfort and convenience.

- ✓ Fully furnished: bed, wardrobe, side tables and chest of drawers
- ✓ Private, wet-room en-suite
- ✓ Option to add accessibility features based on your needs
- ✓ Access to communal areas: a kitchen / diner and living room, gym and training kitchen!
- ✓ Ground floor and first floor rooms available with a lift

Transitional living flats

We recognise the importance of independence for those with brain injuries and the impact this has on quality of life. That's why Knot House has four **transitional living flats**, designed to empower individuals to take the **next step on their rehab journey**.

We'll complete regular assessments to review progress and when they're ready, we'll **help prepare them** for a move back home, into supported living or source long-term support.



The details...

These flats promote the development of re-learned independent living skills.

- ✓ Fully furnished flat
- ✓ Private, wet-room en-suite
- ✓ Your own kitchen, dining room and living room
- ✓ Option to add additional accessibility features!
- ✓ Access to the home's communal gym and training kitchen
- ✓ Ground floor rooms only

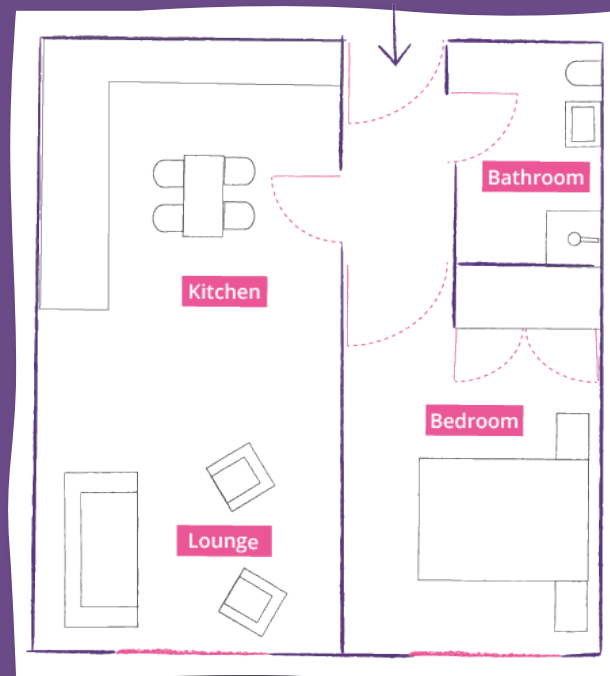
Long-term apartments

Sometimes, individuals are **unable to return home** or simply **need more time** to adjust to living with their brain injury.

That's why we've ensured Knot House can also offer **bespoke, long term support** in our apartments for those that need it.

Like the transitional living flats, these apartments are designed to **maximise independence** alongside on-site support to achieve meaningful outcomes.

Throughout their stay, we'll continue to offer sessional therapy support, monitor progress and support them to **set and achieve goals** that are important to them.



The details...

These apartments offer extended stays in an independent setting.

- ✓ Fully furnished: bed, wardrobe, side tables and chest of drawers
- ✓ Private bathroom, kitchen, dining room and living room
- ✓ First floor and second floor apartments available with a lift



Our pathway

Our specialist brain injury homes are **stepping stones towards independent living**.

We **empower** the people we support with the skills and confidence they need to safely engage with their local community.

Using a person-centred approach, we'll co-create care plans that reflect **what is most important to individuals** so we can deliver positive outcomes that promote quality of life.

Our goal is to help individuals to regain lost skills and support them to **rebuild a meaningful future**.



Specialist brain injury support at home, in the community or in a registered setting.

Injury or event
resulting in
brain injury

Medically stable
discharge

Discharge with
**continuing
needs**

Residential
care & support

Transitional
supported
living
apartments

Independent
supported living
apartments

**Community-
based**
rehabilitation

Therapy
and support
at home



Our approach

We work with multi-disciplinary teams to rehabilitate and provide **ongoing care and support** for people with brain injuries and associated complex needs.

With a focus on **improving quality of life**, we work hard to ensure our support is:

- ✔ Defined based on individual needs.
- ✔ Guided by individual goals.
- ✔ Embedded in local communities.
- ✔ Inclusive of family and support networks.

Our collaborative process empowers, educates, and supports people to take control of their lives and **regain a level of independence** that's right for them.

Through **person-centred, rehabilitation pathways**, we help people to make sense of their brain injury, live fulfilling lives and seek meaningful community opportunities.



Things were so dark, it felt like there was no light at the end of the tunnel. But the team at John Cabot House changed all that. They brought the light back and **gave me a second chance at life!**

Ollie - a person we support at John Cabot House





Helping people
re-learn lost
skills and
live more
independently!

Slow stream rehabilitation

At Voyage Care, we utilise the **slow stream rehabilitation approach** to brain injury care.

Focusing on active support pathways **outside a clinical setting**, we empower the people we support to set and achieve goals and work with accredited professionals to re-integrate back into community. This can take 6-12 months, or longer, depending on their individual needs.

Using a slow stream approach means we consider **social and emotional needs**, supporting people in a holistic way, so they can make progress at a pace that feels comfortable for them.



**FOCUS ON
THE GOOD**

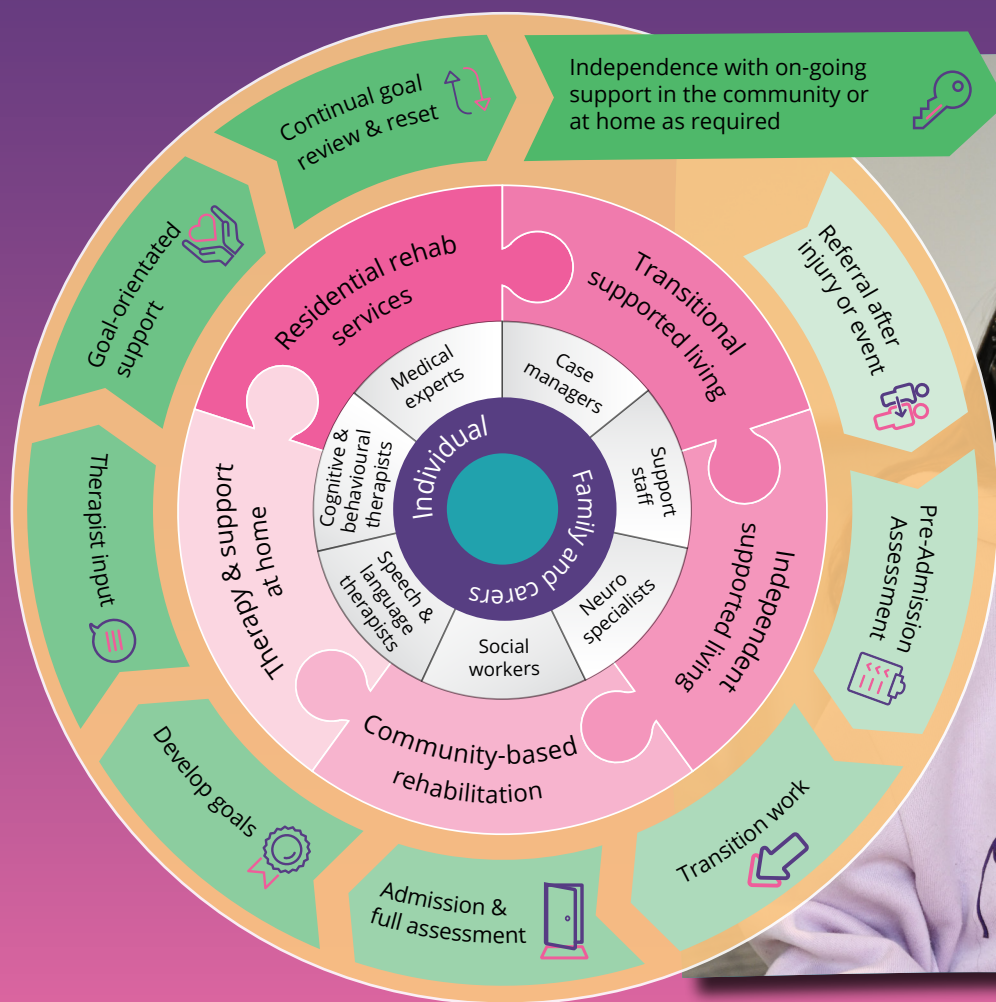
180+ places

for community
based rehab!

How we work with you

We work in partnership with you to achieve individual's goals while **supporting their health, emotional, and social needs**. We do this through **open communication** and regular reporting to ensure collaborative work that puts the individual first.

With a range of settings and **robust, specialist brain injury support processes**, you can rest assured we'll provide positive outcomes that meet the needs of individuals and beyond.



Our other services

- ♥ **Agricola House**, Bury, Greater Manchester
- ♥ **Carville Road**, Wallsend, Newcastle Upon Tyne
- ♥ **Cedar Road**, Dudley, West Midlands
- ♥ **Cleadon Court**, South Shields, Tyne and Wear
- ♥ **Devonshire House**, Ardwick, Manchester
- ♥ **Glasshouse Hill**, Codnor, Derbyshire
- ♥ **John Cabot House**, Bristol, Somerset
- ♥ **Linnet Mews**, Clowne, Derbyshire
- ♥ **London Road**, Gloucester, Gloucestershire
- ♥ **Lorenzo Drive**, Liverpool, Cheshire
- ♥ **Lorenzo Drive Flats**, Liverpool, Cheshire
- Coming soon!**
- ♥ **Maerers House**, Widnes, Cheshire
- ♥ **Markham House**, Bolsover, Chesterfield
- ♥ **Marner House**, Nuneaton, Warwickshire
- ♥ **Rugeley Road**, Chase Terrace, Staffordshire
- ♥ **Sanderling House**, Formby, Merseyside
- ♥ **Summerfield Court**, Leeds, West Yorkshire
- ♥ **Theoc House**, Tewkesbury, Gloucestershire
- ♥ **Walker Lodge**, Liverpool, Merseyside
- ♥ **Willowbrook**, Leicester, Leicestershire
- ♥ **Woodlands**, Middlesbrough, North Yorkshire

Our **specialist brain injury homes** provide over 180 places for community-based brain injury support. We develop services that are of a high-quality and based on best practice approaches, demonstrated by our **partnership with Headway**, the UK's leading brain injury association!

Accredited by



the brain injury association





Scan me!

Scan the QR code to learn more
about **Knot House** on our website!



We'd love to hear from you!

Know someone who would benefit from our specialist brain injury support at Knot House?

Our **expert team** provides advice, support and clear guidance on the next steps to accessing our care.

From initial enquiry, to assessment and transition, we've got you covered! Simply **scan the QR code** and fill in your details - we'll do the rest!

About Voyage Care

Voyage Care is a specialist provider of **support for over 3,500 people** with learning disabilities, autism, brain injuries, and other complex needs.

We're committed to delivering **safe and effective care**, so the people we support can **live incredible lives**.

100%* of our registered brain injury locations are rated Good or Outstanding by the Care Quality Commission.



Scan QR code to
make a referral

voyagecare 